

Burmantofts

COMMUNITY FRIENDS

Supporting over 55's with
social opportunities and
community care

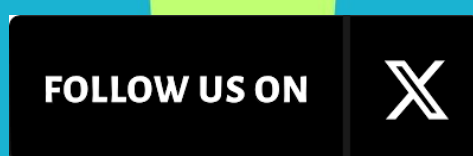
All the news from BCF!

📞 0113 248 9191 📅 June 2025

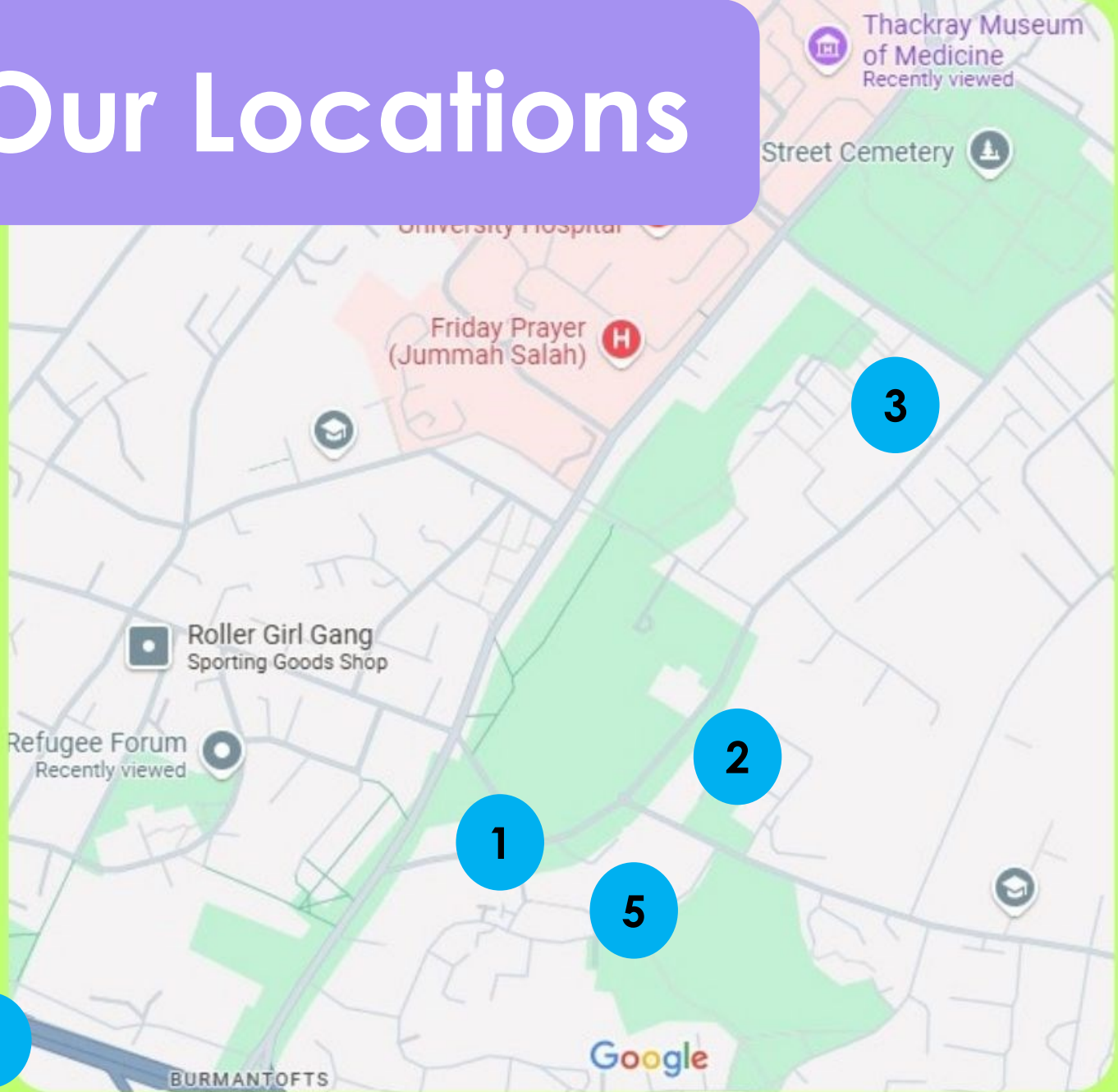
Search Burmantofts Community Friends



**'For me, BCF is about making friends and
having good conversations!'**



Our Locations



1. Anglers Club, 75 Stoney Rock Lane, LS9 7TB
2. Stoney Rock Court, LS9 7HT - off Torre Road
3. St Agnes Church, 23 Shakespeare Close, LS9 7UQ
4. Emmaus Leeds, St Mary's St, Leeds, LS9 7DP
5. Green Acres Care Home, Rigton Drive, LS9 7PY

HOW TO FIND US!



Burmantofts Community Friends

www.burmantofts.org.uk

We Help.



Burmantofts Community Friends (BCF)
Supporting People Aged 55+

At Burmantofts Community Friends (BCF), we're here to support people aged 55 and over with a range of services to help you stay connected, included, informed, and supported in daily life.

We offer **regular social opportunities**, including lunch clubs, fitness groups, trips, events, and friendly group meetups. Whether you're looking to make new friends or just get out and about more, we've got something for you.

Need some advice or support? Our **outreach team** can help with things like **bills, benefits, and other life matters** – and if we don't know the answer, we'll do our best to point you in the right direction.

If you're feeling isolated or just fancy a chat, our **befriending companion service** might be perfect for you. We have trained volunteers who can **call you for a friendly chat** or **visit you at home** for some company.

We also work closely with the **NHS** to run local **health hubs** and provide **self-management support**, helping you stay well, happy and healthy.

Having trouble getting around the city – whether it's for important appointments or just to enjoy some fresh air? We can offer **travel support** too.

Becoming a BCF member is completely free, and we're always happy to welcome new friends! So please tell your friends, neighbours and loved ones about us – or ask our team for an extra copy of the newsletter to pass on.

Tom Armstrong CEO

Get in Touch



Pop into the office



Call us: 0113 248 9191



Email: info@burmantofts.org.uk



Visit: www.burmantofts.org.uk



Follow us on Facebook: Search "Burmantofts Community Friends"



We'd love to hear from you!

Community

Cooking to film to gardening group! There's something for everyone at BCF. For any questions call Sophie on 0113 248 9191, she'll be happy to talk you through the groups!

Women's Group

We are currently in the process of launching a new Women's group, location and timing to be confirmed. Please contact Sophie with your interest!



Mavericks Men's Social

Join us for our Men's Social at **Emmaus** every other week **12 till 2pm**. With 3 trips done this year, we love getting out and about too!

- Friday 13th June • Friday 8th Aug
- Friday 27th June • Friday 22nd Aug
- Friday 11th July • Friday 5th Sept
- Friday 25th July • Friday 19th Sept

Gym Group

Ever fancied a look in at The Gym on York Road? We would be very happy to support your journey if you're interested in getting into fitness that suites you. Contact Sophie with your interest!



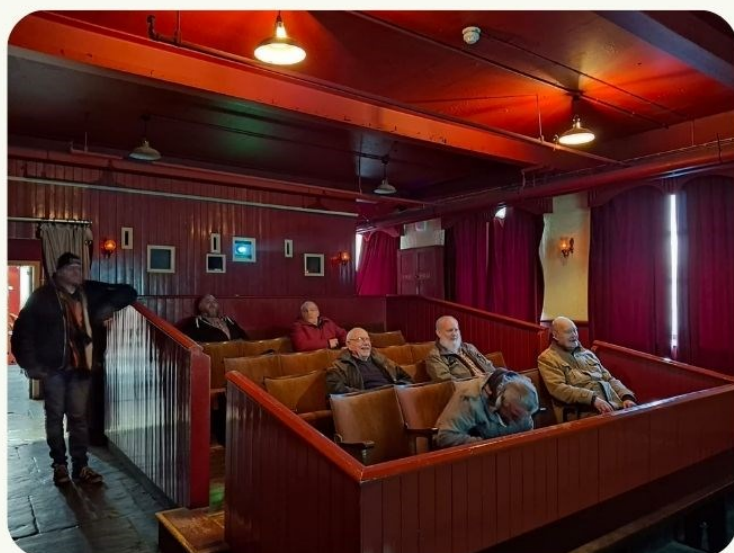
Groups

Cooking Club/Create Your Plate

Join us for a free group exploring all things cooking and trying new foods, always served with a side of conversation. Booking essential!

St Agnes Church, 11 till 1pm

- Thurs 12th June
- Thurs 26th June
- Thurs 10th July
- Thurs 24th July
- Thurs 14th Aug
- Thurs 28th Aug
- Thurs 11th Sept
- Thurs 25th Sept



Film Club

Join us for a monthly movie matinee at the **BCF office, £1** for popcorn and ice-cream! **12:15am start!**

- Friday 20th June
- Friday 4th July
- Friday 1st Aug
- Friday 29th Sept

Gardening Group

Ran by MAFWA, come join Sophie for a lovely morning outside, planting seeds, digging or simply having a cuppa! Meet at the **BCF office at 10am** for a short walk to Roxby Close

- Tues 17th June
- Tues 26th Aug
- Tues 15th July
- Tues 9th Sept
- Tues 29th July
- Tues 23rd Sept
- Tues 12th Aug





COMMUNITY PICTURES



Dancercise



Paul @ Call Companions

Let us know
If you'd like a
weekly chat



Easter Lunch Club



Chair Exercise @ Stoney Rock



Community Cooking Club



Cinema Club - no talking!

BURMANTOFTS COMMUNITIES FESTIVAL

Saturday 14th June 2025

12pm - 4pm

Haslewood Park

(off Torre Rd, LS9 7UZ)

Councillors Asghar Khan, Luke Farley and
Nkele Manaka, are proud to invite all our
community to attend the festival

Supported by local partners and organisations



HEARING AID CLINIC

At Burmantofts Community Friends -
75b Stoney Rock Lane, LS9 7TB

✓ We can help with re-tubing, batteries
and hearing aid advice for people.

✓ Only Hearing aids from
Leeds Teaching Hospital.

Tuesday's 10am-12pm
19th August 2025
18th Nov 2025



Phone
For general enquiries
Tel 0113 288 5750
Mobile 07702 940888
Email
leedsinfo@bid.org.uk

Address
Leeds Sensory Services, Gallery
House, 5th Floor,
123-131 The Headrow, Leeds, LS1
5RD

Website
www.bid.org.uk/leeds



In Burmantofts thirty years ago
 A building was selected
 Inspiring the local community
 To feel happy and protected.
 So here we are
 In a wonderful place
 Where everyone's welcomed
 By a warm smiling face
 You'll feel right at home
 When you walk through the door
 To enjoy the activities
 We have in store.
 There's exercise, lunch clubs
 Days out and more
 And finance advice will help you for
 sure.
 Visit the film shows
 And happy you'll be
 Watching golden oldies on the TV...
 Poem by Kath Walton, BCF Member





Picture This! BCF's 30th Anniversary!

Burmantofts
COMMUNITY FRIENDS



More photos on
our [Facebook](#)
[page!](#)



Click on 'Facebook page' to go
to our Facebook page

TRIPS!



OTLEY

- Thursday 19th June
- Minibus, 13 spaces available
- £10 per person



MORECAMBE

- Thursday 10th July
- Large coach with lift
- £13 per person



BRIDLINGTON

- Thursday 28th August
- Large coach with lift
- £13 per person





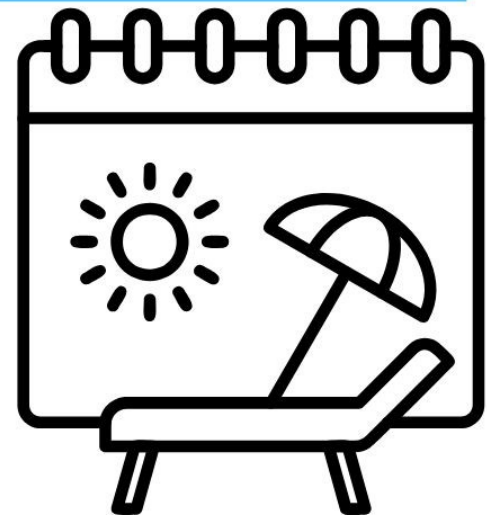
HARROGATE

- Thursday 11th September
- Minibus, 13 spaces available
- £10 per person

We're sure you're aware of the popularity of our trips so booking is essential. To guarantee your place please come to the office with the appropriate payment as soon as you are able.



**BOOK NOW TO
AVOID
DISAPPOINTMENT!**



LET'S GO

ADVENTURE



BREAKING NEWS! BCF HOLIDAY

Great news — we've secured funding for another holiday! Get ready for an amazing trip from **Monday 1st to Friday 5th September!** Call the register to register your interest.

Roll up, roll up! W

MON

Breakfast and Browsers

Anglers Club
10 till 12pm
£1 to £3

Dancercise

BCF Office
1 till 2pm

ONLY £1 per person



TUES

Chair-Based Exercise

Stoney Rock Court
10:15 till 11:15am

ONLY £1 per person

Everyone welcome!

Light Lunch & Bingo

Stoney Rock Court
Activity Room

11:30 till 1:30pm

£3 per person

50p per bingo book



We re
have son
for ever

WE

Lunch Club

Anglers Club
Room

11:30 till 1:30

£4 per pers

50p per bir

Due to pop
you must c
office, if yo
start attend
group.

Weekly Activities!

ally do
something
yone!

***BOOKING
ESSENTIAL***

THURS

FRI

EDS

Craft Group

BCF Office

10 till 12pm

£1 per person

Trips/Events/ Community Groups

o and Bingo
ub Games

0pm

on

ngo book

ularity,

ontact the

u wish to

ling this

See community groups, trips and events pages to have a fun-filled Thursday at BCF!



Events!

New faces always welcome!

Bingo Bash July!

Love bingo? Then this event is for you!

- Thursday 24th July
- Stoney Rock Court
- £6 per person



Summer BBQ!

- Thursday 14th August
- Stoney Rock Court
- £3 per person



Mavericks Men's Social York Railway

Fancy a trip? Maverick's Men's Social are off for a train adventure in June! Contact Sophie for more details.



Hairspray!

Join us at Trinity Academy on Friday 4th July for the musical Hairspray, a FREE event but places are limited, travel support is available, please contact the office to book!



Hearing Aid Clinic

- BCF office
- 10am to 12pm
- Tuesday 20th May
- Tuesday 19th August

Bingo Bash September!

Love bingo? Then this event is for you!

- Thursday 18th September
- Stoney Rock Court
- £6 per person



Burmantofts

COMMUNITY FRIENDS

Trip Checklist

☐

Trip to Otley!

☐

Trip to Morecambe!

☐

Trip to Bridlington!

☐

Trip to Harrogate!

☐

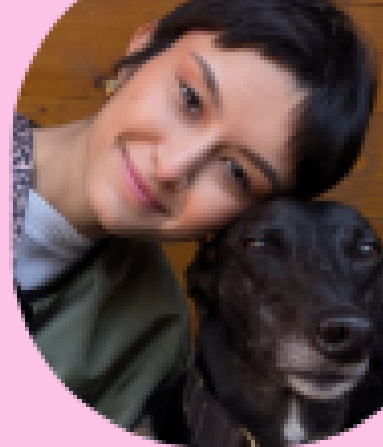
Registered interest in holiday!

☐

Packed and ready to go!

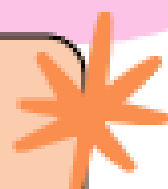


VOLUNTEER VACANCIES



GROUP SUPPORT VOLUNTEERS

Help bring people together by supporting BCF activities in the community, encourage involvement, help people to have fun and make new friends!



DRIVER VOLUNTEER

Drive our accessible car!

Give rides to members who need help getting to our services and activities. Full training & support given.



BEFRIENDING VOLUNTEERS

Offer friendly company to help reduce loneliness, build connections, and bring our community together with weekly phone calls or in-person visits



CHAT TO SABS ON 0113 248 9191 FOR MORE INFO!



Enhance Year 4

We are happy to announce we have secured another year of funding to continue our Enhanced project with LCH (Leeds Community Foundation)! this continues our work with LCH (Leeds Community Healthcare) and the wider Chapeltown neighbourhood team.

BCF Roadshow!

WE ARE GOING MOBILE!

Yes we are bringing BCF to you in our new vehicle to a street near you!

You will be able to join us for a refreshments, games and information on what we do.

Our time table is

- **Monday 9th June - Stephen Road cul-de-sac - 12-2pm**
- **Monday 16th June - Naseby Grange - 10:30-12:30**
- **Monday 23rd June - Shakespears Court - 12-2pm**

More dates to follow - check our Facebook page.



Tips to Boost Your Wellbeing:

- Stay active with short, fun workouts.
- Practice gratitude by writing down 3 things you're thankful for.
- Create a cozy, peaceful space to relax and unwind.
- Connect with loved ones – even a quick call can make a difference.

Outreach Services



"Hello everyone my name is Mary and I have been with BCF since February 2025, it's lovely to be introduced to all the BCF members. I have worked for over 30 years in the charity sector, and have worked all over the Leeds area."

Benefit support

Digital support

Referrals

Financial advice

Any issues you have, we'll try to help.

Help with bills

Housing Issues

WHAT

DAY

WHERE

Breakfast and Browsers

Monday 10-12pm

Anglers Club

Outreach Drop In

Tuesday 10-2pm

BCF Offices

Office Appointments

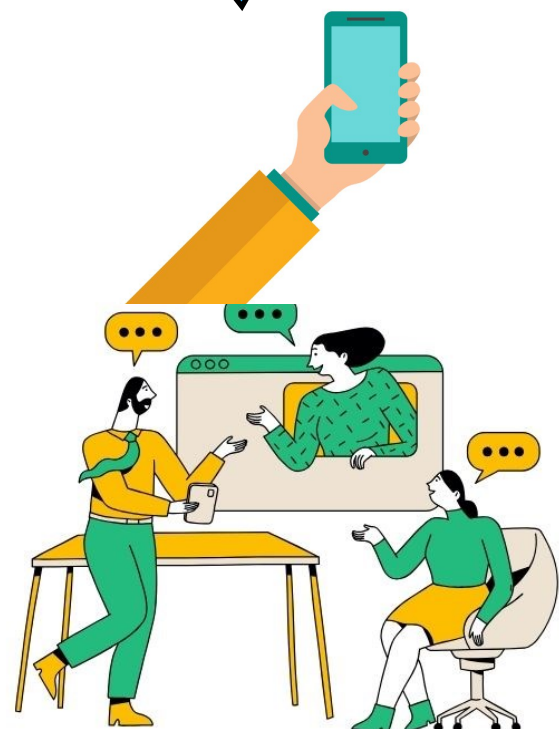
Wednesday 10-1pm

BCF Offices

Home Visits

Thursday
(Bookings only)

Community



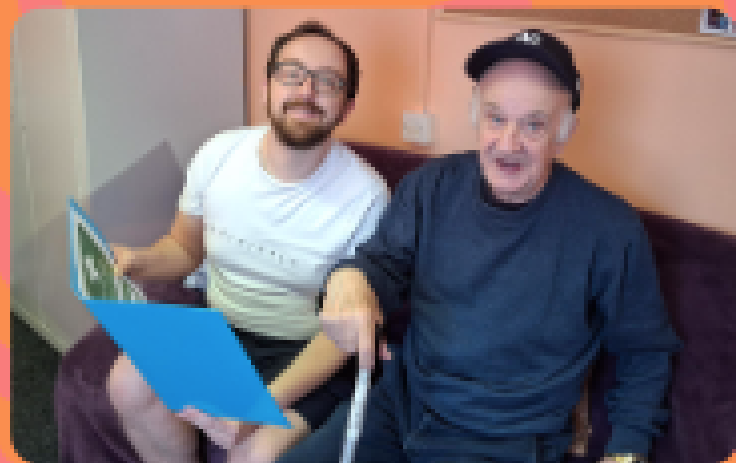
BCF BEFRIENDING SERVICES

Fancy a weekly call or a home visit from a volunteer?



Friendly Faces - Home Befriending

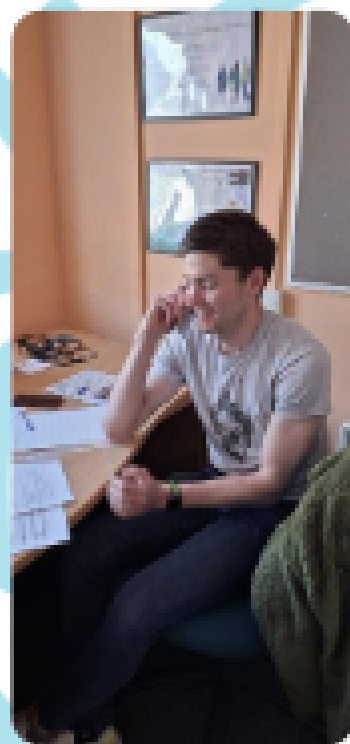
Our home befriending service connects you with a friendly volunteer who visits regularly for a chat and some company. It's a simple way to enjoy conversation and feel more connected, all from the comfort of your home.



Call Companions

Our Call Companions service pairs you with a friendly volunteer who calls every Thursday for a relaxed, cheerful chat.

It's a simple way to stay connected and brighten your day, no matter where you are.



If this sounds like something you'd like, feel free to
chat with Sabs at 0113 248 9191.



TRAVEL CONNECTIONS



Funded by
 **Motability
Foundation**
Making all journeys accessible



Travel With Confidence: Get out and about!

Do you want to:

- Increase your confidence using transport?
- Reach new places through travel?
- Return to places you used to go?
- Improve your health and wellbeing by getting out and about?

Start your journey, contact us today!



For more information contact Sabs at Burmantofts Community Friends:

Tel: 07454 404580

E: volunteer@burmantofts.org.uk

www.burmantofts.org.uk

Scan Me





Thank You

for your support



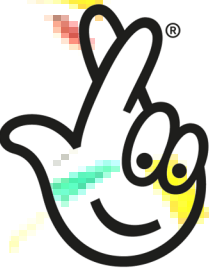
Leeds
CITY COUNCIL



Enhance



Leeds
Community
Foundation



COMMUNITY
FUND



**Age
Friendly
Leeds**



Windmill Community Transport



**Leeds Benevolent Society
for Single Ladies**



Thank You for Your Support

Burmantofts Community Friends is only possible thanks to the kind generosity of our partners and stakeholders.

From everyone at BCF – our members, trustees, staff, and volunteers – we sincerely thank you for your continued support. Your contributions help us make a real difference in the lives of people aged 55 and over in our community.

Together, we're building a stronger, more connected Burmantofts

Your Local Councillors

Burmantofts & Richmond Hill Ward

Councillor Asghar Khan

Phone: (0113) 378 8819

Email: asghar.khan@leeds.gov.uk

Mobile: 07761 230 027



Councillor Nkele Manaka

Phone: (0113) 378 8819

Email: nkele.manaka@leeds.gov.uk



Councillor Luke Farley

Phone: (0113) 378 8819

Email: luke.farley@leeds.gov.uk

Mobile: 07407 091 449



1st Friday of the month, 6-7pm, 1 The Lane, Saxton Gardens, LS9 8HQ

1st Saturday of the month, 10am - 11am - Crompton Centre, Harehills Lane, LS9 7BG

1st Saturday of the month, 11.15am - 12.15pm - The Vinery Centre, Leeds, LS9 9LR

3rd Tuesday of the month, 12.30pm-1.30pm -, St Vincents Centre, 4 Berking Avenue, LS9 9LF

3rd Tuesday of the month, 1.45pm - 2.45pm - Burmantofts Hub, Rigton Lawn, LS9 7QA

More information available here: <https://democracy.leeds.gov.uk/mgUserInfo.aspx?UID=2627>

BCF Office, come say hello!

Find us

Burmantofts Community Friends

Anglers Club

Lower Ground Floor

75B Stoney Rock Lane,

Leeds, LS9 7TB



The BCF offices are down the slope from the main Anglers Club entrance, follow the car park round. For easy access when walking we have a gate entrance opposite the office door.

Our office phone lines are open *Monday to Friday* **10am till 4pm**

Telephone: 0113 248 9191

Email: info@burmantofts.org.uk

Burmantofts Community Friends is a working name of Burmantofts Senior Action.

CHARITY REGISTRATION NO:

1175661

